



NSW Koala Strategy

Regional Delivery – Southern NSW

Lachlan Wilmott – Team Leader

Jess Bettanin – Far South Coast Koala Officer



Acknowledgement of Country

We acknowledge that today we meet on the lands of the many Aboriginal people and pay our respects to the Traditional Custodians, Elders and Ancestral Spirits of these lands and other lands that we live and work on.

We acknowledge the sacred importance of Country to Aboriginal people and try to work together through thoughtful and collaboratively





NSW Koala Strategy 2021–26

Investment of over \$190 million over 5 years to double the number of koalas by 2050



Pillar 1

Koala habitat conservation
\$106.7 million
to fund the protection, restoration and improved management of more than 47,000 hectares of koala habitat



Pillar 2

Supporting local communities to conserve koalas
\$19.6 million
to fund partnerships across NSW



Pillar 3

Improving the safety and health of koalas
\$24.1 million
to remove threats, improve health and rehabilitation, and establish a translocation program



Pillar 4

Building our knowledge of koalas
\$42.8 million
to fill knowledge gaps and establish a baseline number of koalas

Koala Strategy Delivery and Implementation

DCCEEW Science

- Responsible for:
 - Baseline Surveys
 - Research Strategy
 - Monitoring Design:
 - Population
 - Disease
 - Funding

DCCEEW Regional Delivery

- Key element is supporting and coordinating regional partnerships
- Supporting and coordinating local:
 - Habitat restoration
 - Vehicle Strike Mitigation
 - Koala habitat mapping
- Supporting and delivering Science and NPWS with local knowledge and networks

NPWS

- Responsible for:
 - Translocation
 - On park habitat restoration
 - Some monitoring

Koala Conservation also considered under other areas of DCCEEW such as NPWS Assets of Intergenerational Significance.



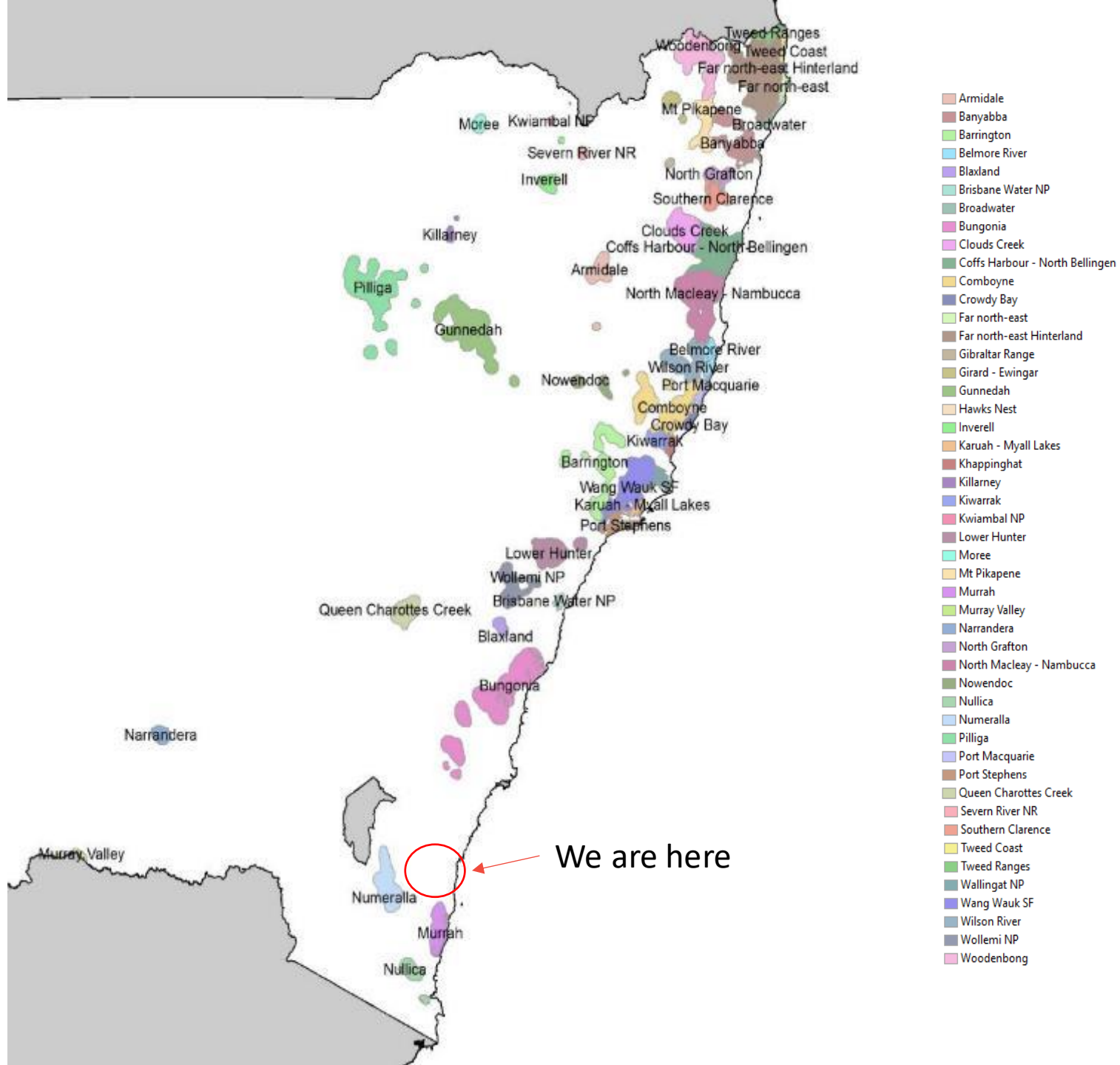


Prioritising populations for intervention

- **50 Areas of Regional Koala Significance (ARKS)**

- Based on koala records

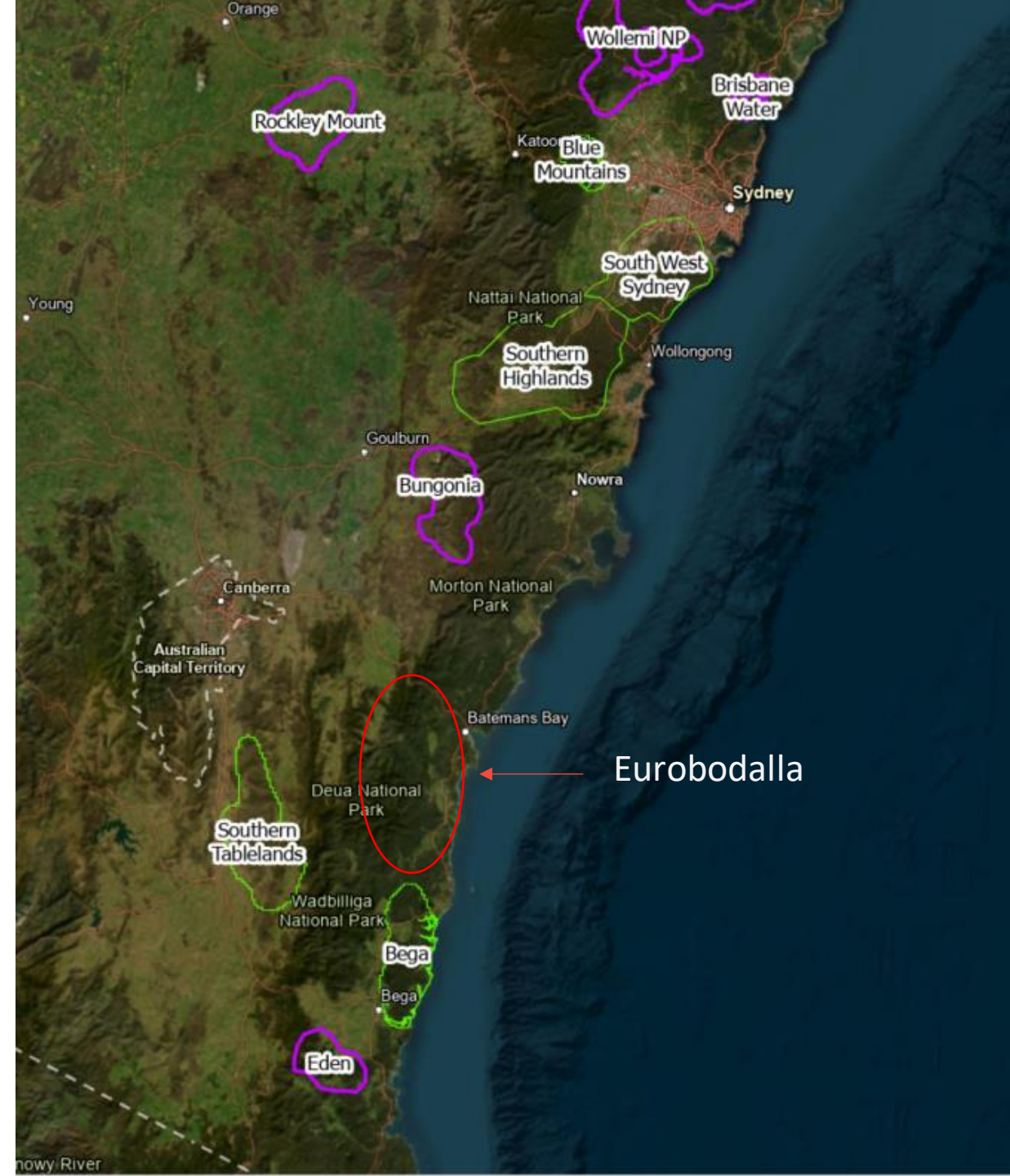
- **19 Populations for immediate investment**



Southern NSW ARKS

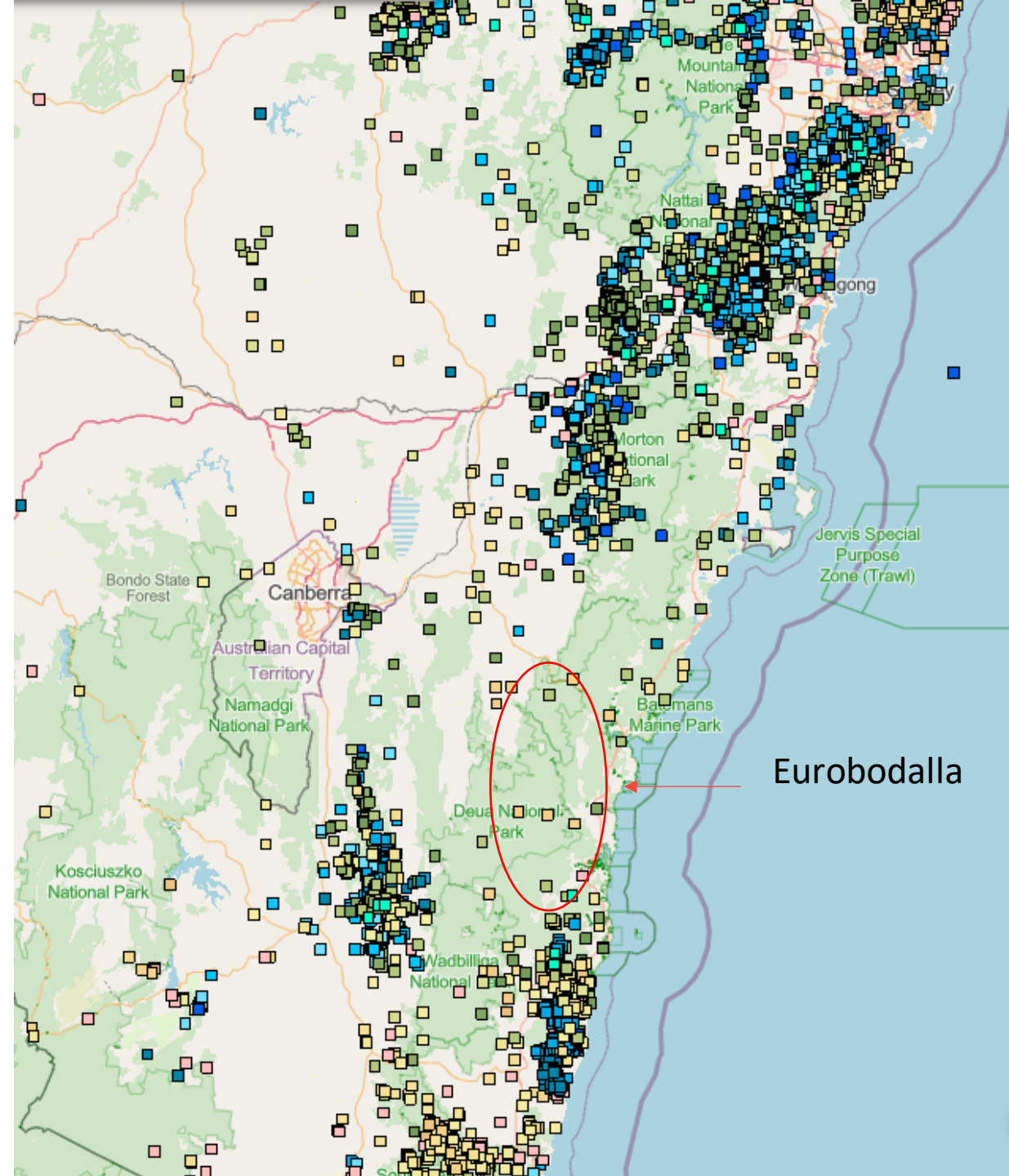
What we are doing in Southern NSW:

- **Monitoring**
 - Acoustic
 - Thermal drone
 - Chlamydia
- **Habitat Mapping**
 - Southern Highlands and SW Sydney
- **Habitat Restoration**
 - Sthn Highlands, Sthn Tablelands, SW Sydney, Bega
- **Vehicle Strike Mitigation**
 - Sthn Highlands and SW Sydney
- **Fire planning**
 - Sthn Highlands, Sthn Tablelands, SW Sydney, Bega

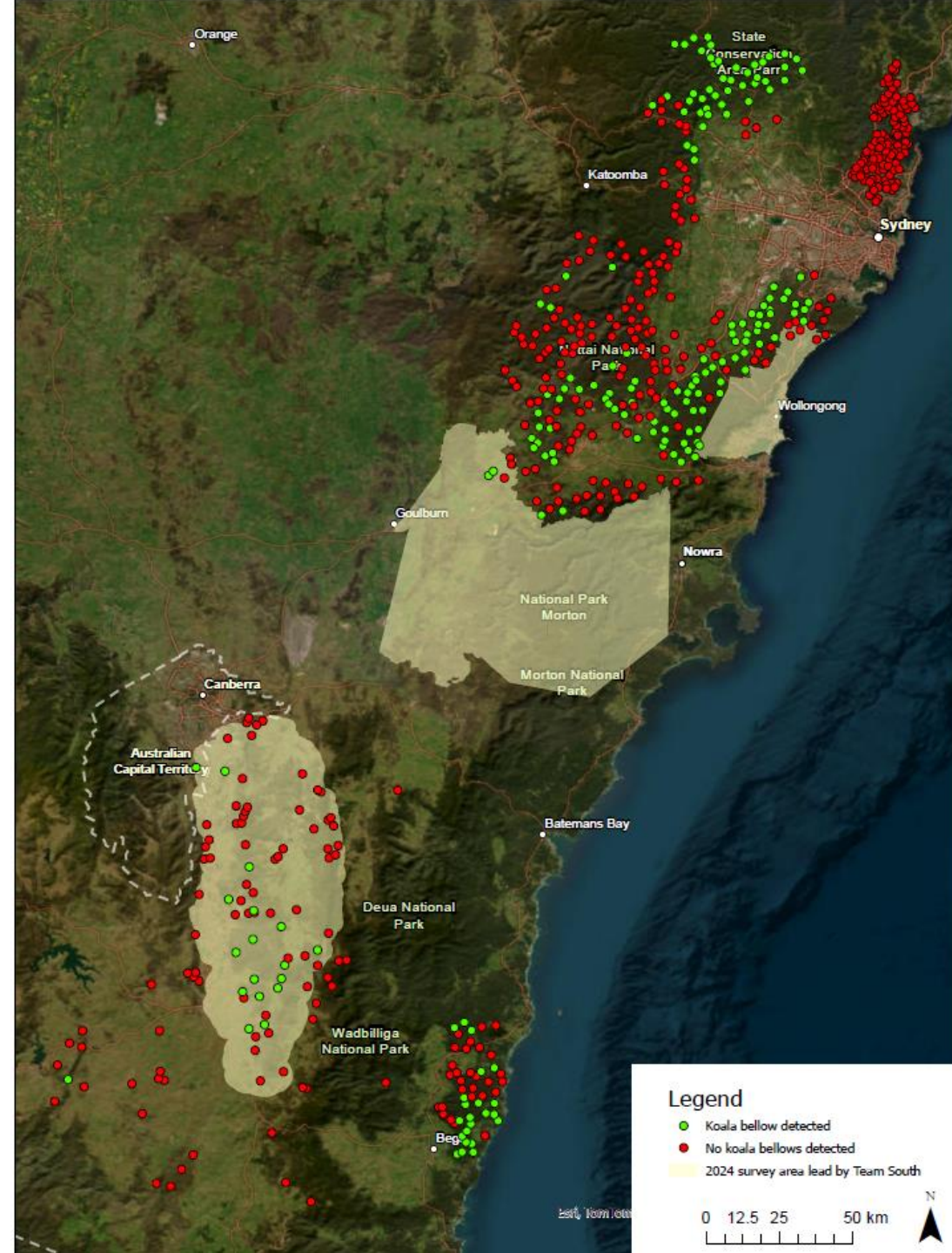


Southern NSW ARKS

- The Eurobodalla area is part of a vast wildlife/wilderness corridor connecting Sydney to the Victorian border
- Connectivity is critical at both a landscape and local level
- Very few records in the region but partly due to:
 - Lack of survey effort
 - Use of less effective survey methods in the past
 - Access
- No ARKS in the Eurobodalla
 - Great that Eurobodalla Koala Project stepping into this void to collect information
 - Very keen to support, align methods and share data



Monitoring Results to date

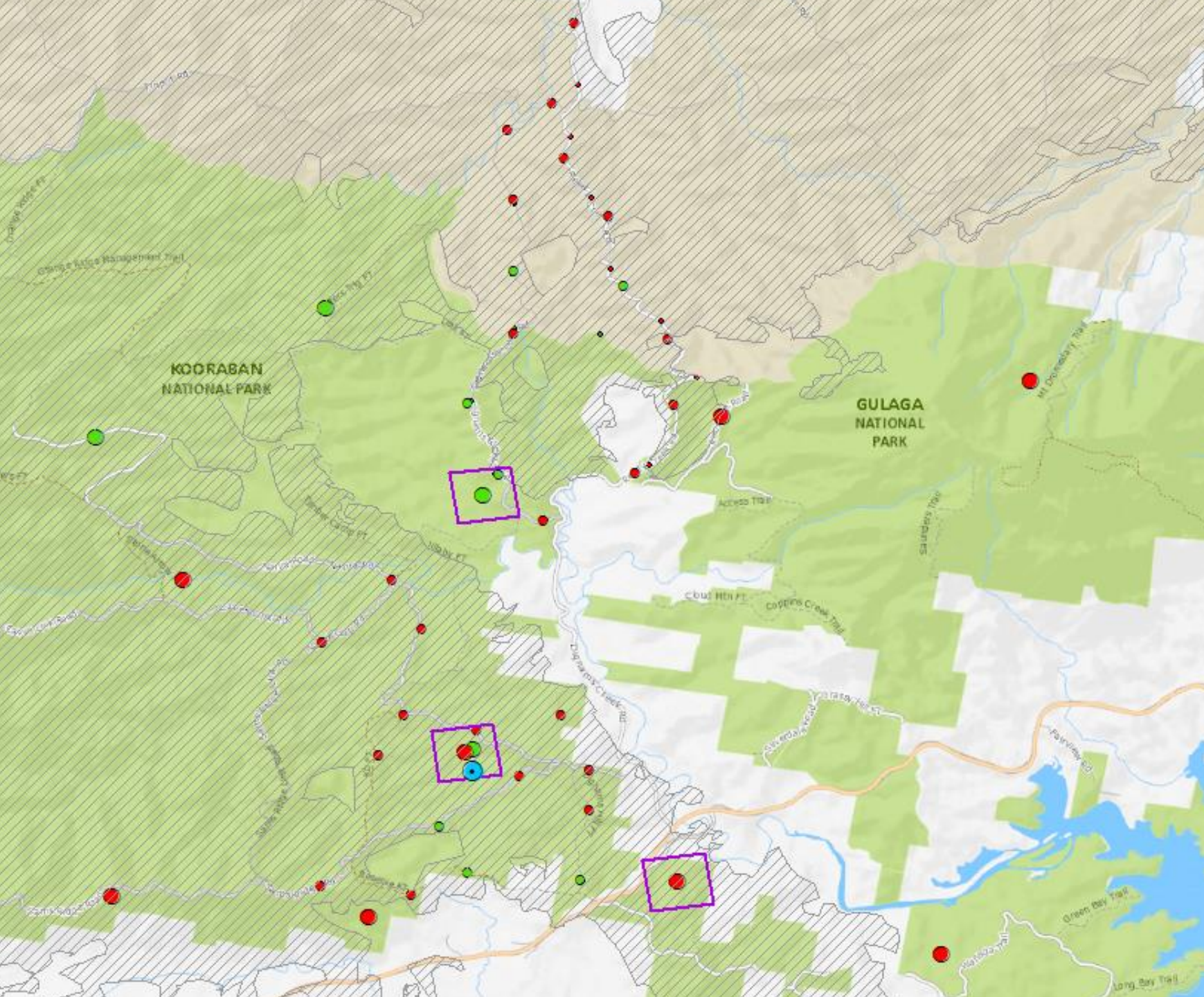


Bega ARKS Partnership

- Partnership with the Yuin community of the Far South Coast on Djirringanj Country to support care for koala country and koala conservation.
- Working on jointly managed landscape. Gulaga and Biamanga were the first national park in NSW to be handed back to Traditional Owners back in 2006.
- Supporting Traditional Owners to undertake cultural land management to support koala habitat restoration.
- Supporting Aboriginal community to be involved and build skills in koala monitoring and conservation.

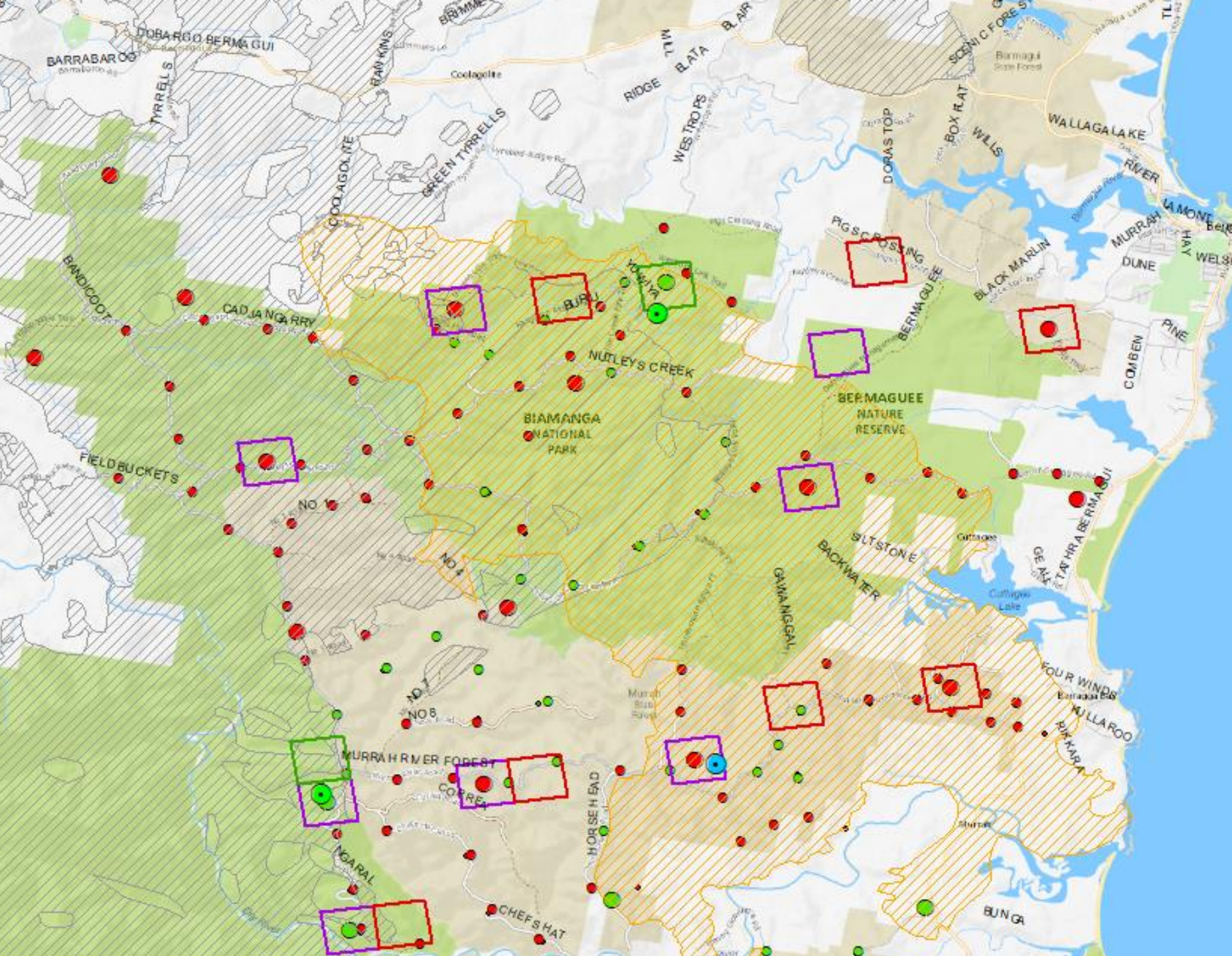


Kooraban & Gulaga/ Dignams Creek

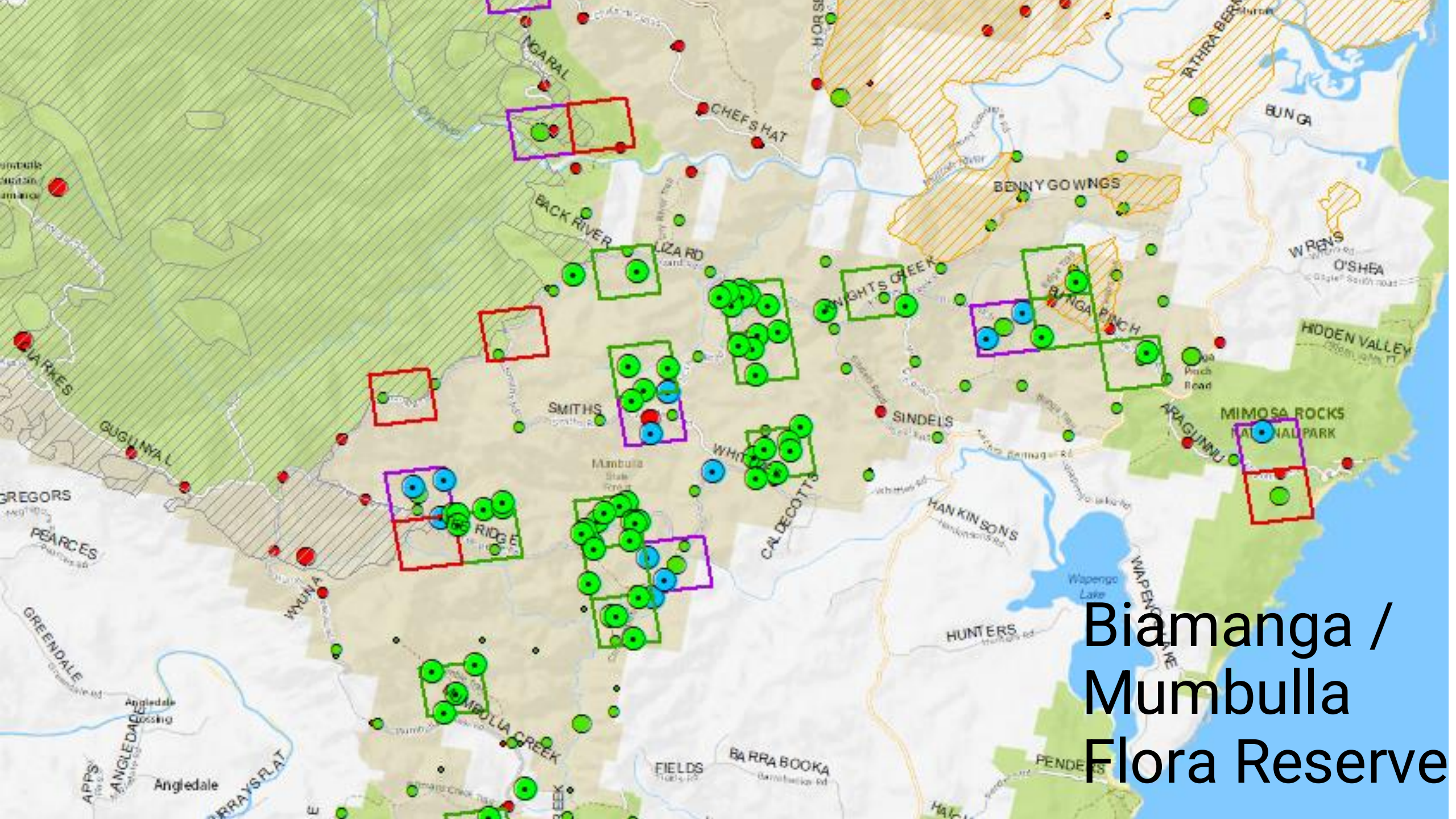


Acoustic monitoring:

- PRESENT
- ABSENT



Biamanga
North and North
of the Murrumbidgee
River



Biamanga /
Mumbulla
Flora Reserve



Key Findings – Bega ARKS

- Number of koalas in the Murrah – Biamanga landscape are much higher than we previously understood.
- Koalas continue to be present in Kooraban and Dignams Creek area.
No recent evidence of koalas persisting on Gulaga – but not much survey effort.
- North of the Murrah where we have had the two big fires ('20 and '23) there is evidence that koalas are persisting but densities are low. We want to prioritise better understanding koalas in the North of the Murrah this year.
- Core habitat area mostly Wapengo / Middle Lagoon Upper Catchment.
High densities in some parts of this area – but its also patchy.

Take home messages

- Importance of working together to share info and optimise outcomes
 - Consistent methods
 - Avoiding duplication
 - Supporting Eurobodalla Koala Project and Forestry Corporation NSW to undertake koala surveys this year
 - Ensuring findings are entered into publicly accessible database where it can inform development planning and conservation strategy.
- Koala Strategy will be relaunched next year
- Local community key stakeholder in koala conservation. Important role to play both delivering and reporting.
 - Report koala sightings Google “nsw koala country report a sighting” – use the manual data entry form